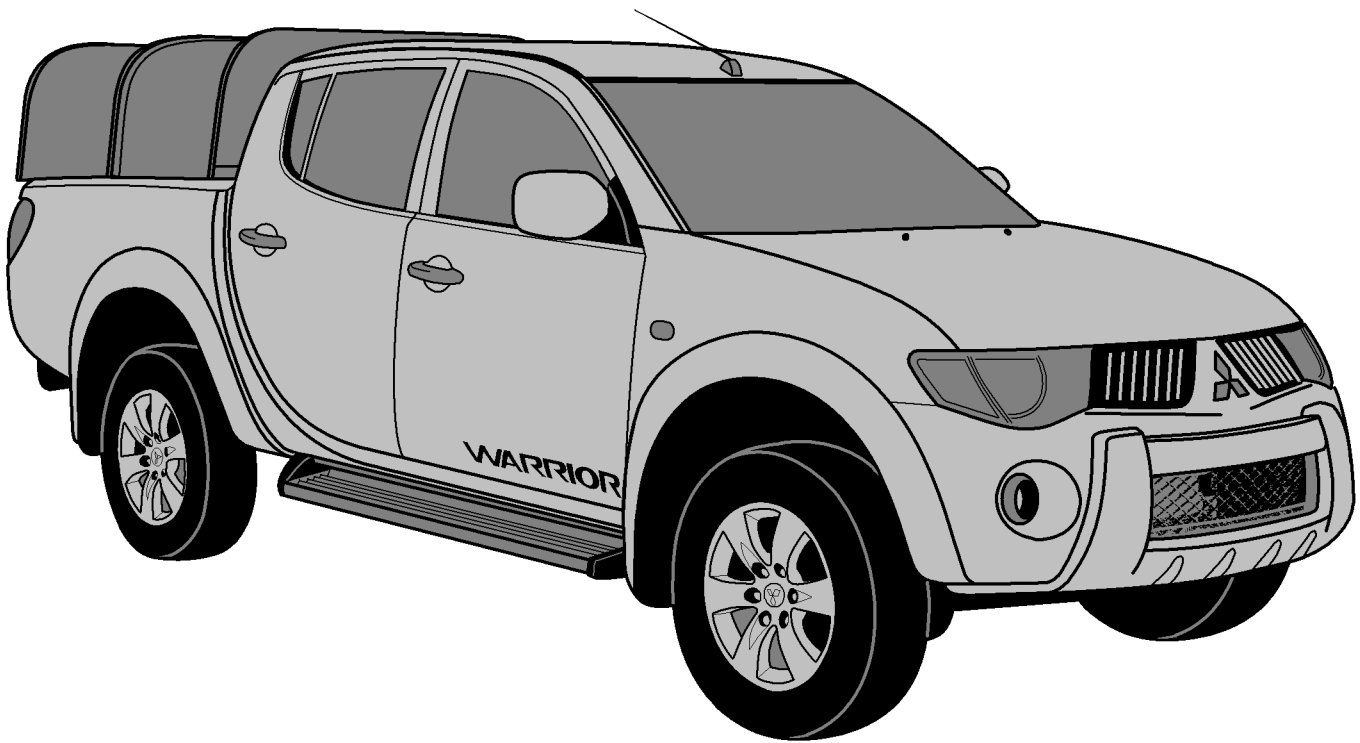


Canopy dimensions & fittings guide



This document is to be consulted at the time of viewing the vehicle to determine the correct canopy for the customer.

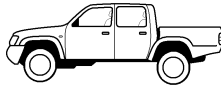
Many pick-ups can be imported and their measurements & specifications differ from the UK model (even though they may bear the same model name). It is important that the measurements are verified if there is any doubt.



**BRITAIN'S LEADING TRAILER
MANUFACTURER**



FM13224

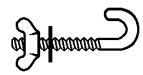
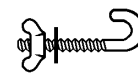
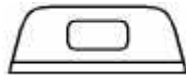


Partcode	Manufacturer Model	Production date(s)	Width (Front)	Width (Rear)	Length
Vauxhall (Bedford)					
V308	Brava 2300 Single cab	May 1997 >	1568	1568	2336
V309	Brava 2300 Crew cab	May 1997 >	1568	1568	1536
Isuzu Rodeo / Chevrolet					
V490	Single cab [H/L Brake lamp]	Aug 2005 >	1625	1606	2362
V491	Double cab (& Denver models) [H/L Brake lamp]	May 2005 >	1594	1568	1473
Isuzu					
V318	TF 2.5 D Ti Crew cab	2003 >	1561	1554	1549
Kubota					
V375	RTV 900 Utility vehicle	2006 >	1390	1390	1220
Landrover					
V382	Landrover 88 inch Wheelbase models	1971 - 1986	1550	1550	1105
V383	Defender 90 SWB	1984 >	1550	1550	1206
V379	Defender 110 LWB Double cab	2000 >	1568	1568	1099
V381	Defender 110 LWB Single cab	1988 >	1550	1550	2045
V380	Defender 110 Hi - Cap	1988 >	1720	1720	2045
V386	Defender 130 Crew Cab	1992 >	1720	1720	1752
Mazda					
V395	B2500 Double cab	1997 >	1555	1540	1594
Mazda / Ford Ranger					
V398	Mazda 99 / Ford Ranger Double cab	1999 - 2006	1568	1537	1594
V397	Mazda 99 / Ford Ranger Regular cab (Single cab)	1999 - 2006	1568	1537	2337
V399	Mazda 99 / Ford Ranger Super cab (King cab)	1999 - 2006	1562	1537	1816
V389	Mazda BT-50 / Ford Ranger 2007 Single cab	Jan 2007 >	1549	1549	2286
V387	Mazda BT-50 / Ford Ranger 2007 Double cab	Jan 2007 >	1549	1549	1547
V388	Mazda BT-50 / Ford Ranger 2007 Super cab	Jan 2007 >	1549	1549	1778
Mitsubishi					
V401	L200 4x4 Single cab	1988 - 1997	1606	1606	1936
V406	4 Life/Warrior/Animal/Trojan* - Crew cab (smooth sided)	1999 - 2005	1581	1575	1562
V406W	4 Work - Crew cab (External rail and rope cleats)	1999 - 2005	1581	1575	1562
V404	L200 4x4 Single cab	1997 - 2006	1578	1575	2317
V405	L200 4x4 Crew cab (GL)	1998 - 2006	1581	1575	1562
V409	L200 Club cab	2004 - 2006	1587	1581	1892
V411	L200 2006 model - Double cab [curve to rear sides]	Apr 2006 >	1450	1450	1400
V412	L200 2006 model - Club cab	Oct 2006 >	1645	1594	1848
V413	L200 2006 model - Single cab	Aug 2006 >	1632	1613	2286
Nissan					
V344	D22 Single cab	1998 >	1562	1556	2317
V346	D22 Double cab	1998 >	1568	1568	1473
V345	D22 King cab	1998 >	1568	1568	1943
V347	Navara Double cab - (vehicles without ladder rack)	2001 - 2005	1555	1549	1473
V417	Navara Double cab - (vehicles with ladder rack)	2001 - 2005	1555	1549	1473
V348	Navara King cab - (vehicles without ladder rack)	2001 - 2005	1555	1549	1943
V418	Navara King cab - (vehicles with ladder rack)	2001 - 2005	1555	1549	1943
V419	Navara Double cab D40 Model # (without ladder rack)	2005 >	1490	1490	1550
V421	Navara Double cab D40 Model # (with ladder rack)**	2005 >	1490	1490	1550
V420	Navara King cab D40 model # (without ladder rack)	2005 >	1490	1490	1900
V422	Navara King cab D40 model # (with ladder rack)**	2005 >	1490	1490	1900

* Old style Trojan models continued to be sold during 2006, alongside the newer style vehicles.

Check vehicle VIN plate, some Navara models have been produced (2005/6) with D22 style rear bodies, if this is the case treat as D22 models.

** Canopies for Navara vehicles with ladder rack are shaped to fit around rack base and will not fit other models.



Partcode Canopy side lip fitting Front panel type Fittings type Fittings located

Vauxhall (Bedford)

V308	Outside	Flat/over the rack	60mm J Bolt	Outside
V309	Outside	Flat/over the rack	60mm J Bolt	Outside

Isuzu Rodeo / Chevrolet

V490	Outside	Alloy strip	60mm J Bolt	Outside
V491	Outside	Front angle	70mm J Bolt	Inside

Isuzu

V318	Outside	Alloy strip	60mm J Bolt	Outside
------	---------	-------------	-------------	---------

Kubota

V375	Outside	Front Angle (Forward facing)	60mm J Bolt	Outside
------	---------	------------------------------	-------------	---------

Landrover

V382	Outside	Side infill around cab	90mm J Bolt	Inside
V383	Outside	Side infill around cab	90mm J Bolt	Inside
V379	Outside	Side infill around cab	90mm J Bolt	Inside
V381	Outside	Side infill around cab	90mm J Bolt	Inside
V380	Outside	Front angle	M8 x 25 Bolt	Outside
V386	Outside	Front angle	M8 x 25 Bolt	Outside

Mazda

V395	Inside	Flat/over the rack	90mm J Bolt	Inside
------	--------	--------------------	-------------	--------

Mazda 99 / Ford Ranger

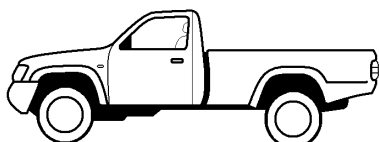
V398	Outside	Flat/over the rack	90mm J Bolt	Inside
V397	Outside	Flat/over the rack	90mm J Bolt	Inside
V399	Outside	Flat/over the rack	90mm J Bolt	Inside
V389	Outside	Forward facing lip that meshes with rack	90mm J Bolt	Inside
V387	Outside	Forward facing lip that meshes with rack	90mm J Bolt	Inside
V388	Outside	Forward facing lip that meshes with rack	90mm J Bolt	Inside

Mitsubishi

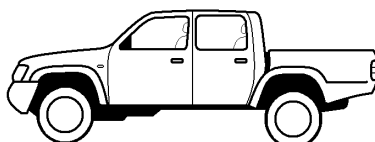
V401	Outside	Flat/over the rack	90mm J Bolt	Outside
V406	Outside	Front Angle	90mm J Bolt	Inside
V406w	Outside	Flat/over the rack	90mm J Bolt	Inside *
V404	Outside	Flat/over the rack	60mm J Bolt	Outside
V405	Outside	Flat/over the rack	60mm J Bolt	Outside
V409	Outside	Alloy strip	90mm J Bolt	Inside
V411	Inside	Double angle (flange up & down)	90mm J Bolt	Inside
V412	Inside	Front angle	60mm J Bolt	inside
V413	Inside	Front alloy strip	60mm J Bolt	Outside

Nissan

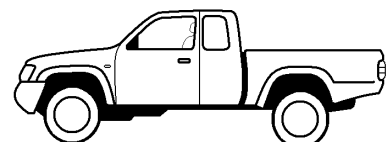
V344	Outside	Flat/over the rack	70mm J Bolt	Inside
V346	Outside	Flat/over the rack	70mm J Bolt	Inside
V345	Outside	Flat/over the rack	70mm J Bolt	Inside
V347	Inside	Front angle	70mm J Bolt	Inside
V417	Outside	Flat/over the rack	70mm J Bolt	Inside
V348	Outside	Front angle	70mm J Bolt	Inside
V418	Inside	Flat/over the rack	70mm J Bolt	Inside
V419	Inside	Front angle	80mm J Bolt	Inside
V421	Inside	Special cutout around ladder rack fixture	80mm J Bolt	Inside
V420	Inside	Front angle	80mm J Bolt	Inside
V422	Inside	Special cutout around ladder rack fixture	80mm J Bolt	Inside



Single / Regular Cab



Double / Twin / Crew Cab



King / Club / Extra Cab

* Revised fittings arrangement



Partcode Manufacturer Model Production date(s) Width (Front) Width (Rear) Length

Skoda / VW

V515	Skoda Felicia / VW Caddy	Sept 1996 >	1530	1518	1524
------	--------------------------	-------------	------	------	------

Toyota

V462	Hi - Lux MK3 Single cab	1989 - 1997	1568	1556	2196
V463	Hi - Lux MK3 Crew cab	1989 - 1997	1568	1555	1475
V467	Toyota Crew cab [Smooth sided with no ladder rack]	1998 >	1558	1549	1422
V465	Toyota Mk4 Single cab (240/250 models)	1998 >	1556	1556	2185
V466	Toyota Mk4 Crew cab (270/280 models)	1998 >	1556	1556	1372
V4691	Toyota MK6 Single cab	Sept 2005 >	1607	1607	2337
V469	Toyota MK6 Crew cab (Invincible & Vigo No ladder rack)	Sept 2005 >	1511	1511	1613
V4692	Toyota MK6 Crew cab (HL2 HL3 with ladder rack)	Feb 2006 >	1511	1511	1547
V4693	Toyota MK6 Extra cab (HL2 HL3 with ladder rack)	April 2007 >	1511	1511	1842

Canopies for trailers

V600 * \$	GD64G (trailers with 4' Ramp)	1986 - 2005	1346	1346	1950
V601 \$	GD64G (trailers Tail Board)	1986 - 2005	1346	1346	1950
V610 * \$	GD84G (trailers with 4' Ramp)	1986 - 2005	1346	1346	2558
V611 \$	GD84G (trailers with tailboard)	1986 - 2005	1346	1346	2558
V612 * \$	GD85G (trailers with 4' Ramp)	1986 - 2006	1657	1657	2635
V613 \$	GD85G (trailers with Tailboard)	1986 - 2006	1657	1657	2635
V600M * \$	GD64M (Metric trailer with 4' Ramp)	2005 >	1365	1365	1950
V601M \$	GD64M (Metric trailer Tail Board)	2005 >	1365	1365	1950
V610M * \$	GD84M (Metric trailer with 4' Ramp)	2005 >	1365	1365	2559
V611M \$	GD84M (Metric trailer with tailboard)	2005 >	1365	1365	2559
V612M * \$	GD85M (Metric trailer with 4' Ramp)	2006 >	1689	1689	2559
V613M \$	GD85M (Metric trailer with Tailboard)	2006 >	1689	1689	2559
V635 * #	P6e (trailer with ramp)	1997 >	1309	1309	2045
V641 #	P6e (trailer with tailboard)	1997 >	1309	1309	2045
V645 **	P6e (trailer with ramp) Livestock Version	1997 >	1309	1309	2045
V660 * #	P7e (trailer with ramp)	2005 >	1309	1309	2275
V661 #	P7e (trailer with tailboard)	2005 >	1309	1309	2275
V665 **	P7e (trailer with ramp) Livestock Version	2005 >	1309	1309	2275

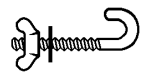
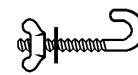
Tailgate options

All the canopies in the table above are fitted with a mesh tailgate as standard, similar to that shown here on the Mitsubishi L200 Double Cab.

If the part code is suffixed with the letter A then the canopy will be supplied with an aluminium rear door and 24" x 12" toughened glass window (see inset), a similar glass panel will be fitted to the front of the canopy in place of the standard mesh screen.

For aluminium rear door option on Pick-up vehicles add £75 to canopy price, for trailer canopies please phone our sales dept for option prices.





Partcode	Canopy side lip fitting	Front panel type	Fittings type	Fittings located
----------	-------------------------	------------------	---------------	------------------

Skoda / VW

V515	Outside	Front angle	90mm J Bolt	Inside
------	---------	-------------	-------------	--------

Toyota

V462	Outside	Flat/over the rack	70mm J Bolt	Outside
V463	Outside	Flat/over the rack	70mm J Bolt	Outside
V467	Inside	Front angle	90mm J Bolt	Inside
V465	Outside	Forward facing lip that meshes with rack	70mm J Bolt	Outside
V466	Outside	Forward facing lip that meshes with rack	70mm J Bolt	Outside
V4691	Outside	Forward facing lip that meshes with rack	60mm J Bolt	Outside
V469	Inside	Front angle	90mm J Bolt	Inside
V4692	Inside	Forward facing lip that meshes with rack	90mm J Bolt	Inside
V4693	Inside	Forward facing lip that meshes with rack	90mm J Bolt	Inside

Canopies for trailers

V600	Outside	Front angle	M8 x 25 Bolt	Through
V601	Outside	Front angle	M8 x 25 Bolt	Through
V610	Outside	Front angle	M8 x 25 Bolt	Through
V611	Outside	Front angle	M8 x 25 Bolt	Through
V612	Outside	Front angle	M8 x 25 Bolt	Through
V613	Outside	Front angle	M8 x 25 Bolt	Through
V600M	Outside	Front angle	M8 x 25 Bolt	Through
V601M	Outside	Front angle	M8 x 25 Bolt	Through
V610M	Outside	Front angle	M8 x 25 Bolt	Through
V611M	Outside	Front angle	M8 x 25 Bolt	Through
V612M	Outside	Front angle	M8 x 25 Bolt	Through
V613M	Outside	Front angle	M8 x 25 Bolt	Through
V635	Outside	Front angle	M8 x 25 Bolt	Through
V641	Outside	Front angle	M8 x 25 Bolt	Through
V645	Outside	Front angle	M8 x 25 Bolt	Through
V660	Outside	Front angle	M8 x 25 Bolt	Through
V661	Outside	Front angle	M8 x 25 Bolt	Through
V665	Outside	Front angle	M8 x 25 Bolt	Through

Notes - Canopies for trailers

* Canopies for trailers fitted with a ramp are open back construction and cannot be ordered with aluminium door option.

** Refers to a canopy fitted with ramp side gates and louvre vents in front panel. These canopies are not normally supplied with cross-divisions unless specifically requested (at extra cost)

Please note: cross divisions may need to be added to fully comply with animal transport regulations.

\$ GD Canopies will always be delivered separately from any trailers ordered, and will incur a separate delivery charge.

These models available with louvre vents in front panel for those wishing to carry dogs in the trailer (option available only with ramp and meshgate versions marked # in table) suffix V to partcode i.e. V660V.

Note: this option is **NOT A LIVESTOCK CANOPY** and therefore will not be fitted with ramp gates or cross division locations etc..



GD85M fitted with V612M

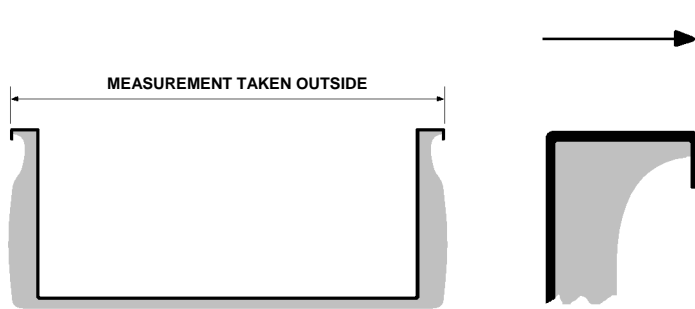


P6e fitted with V635

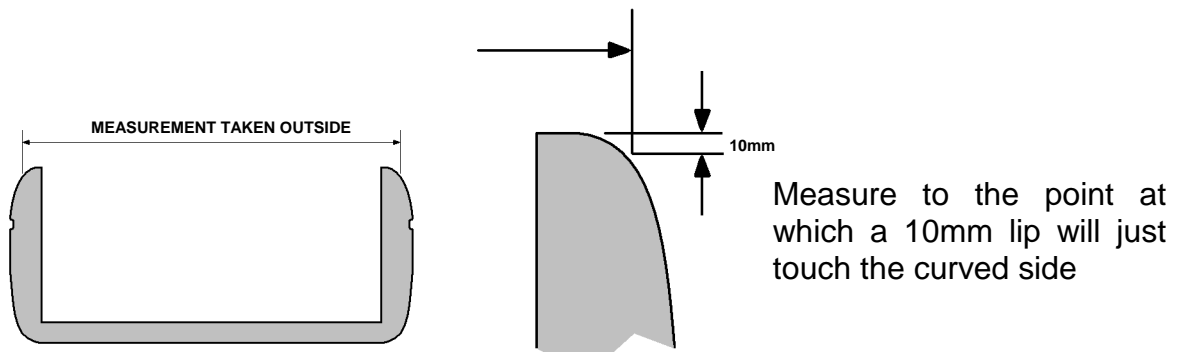
Measuring the vehicle

The vehicle may need to be measured on the inside or outside depending upon the type of side construction employed. The table should be consulted to see if the vehicle is either “inside” or “outside” type and measurements taken as follows:

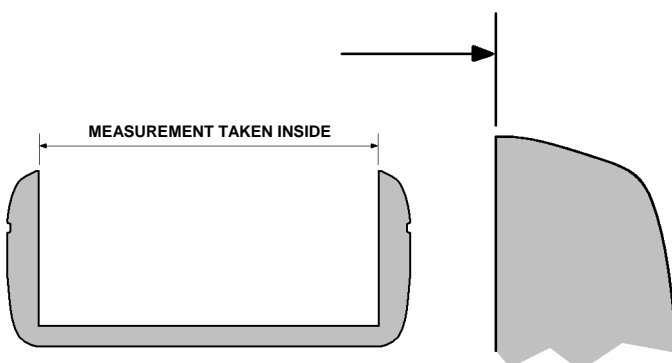
Outside fitting (where vehicle has square or lipped sides)



Outside fitting (where vehicle has very curved sides)



Inside fitting (where vehicle is too curved to fit outside)



Vehicles with load liners:

In some cases the load liner does not affect the fitting of the canopy, in others it may impair it. load liners are generally manufactured by a third party and not the vehicle manufacturers themselves, many manufacturers use more than one type on the same model and this has led to a huge variation in thickness and fitting styles being available.

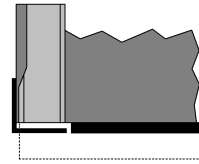
It would be impractical for us to accommodate these within our design, therefore it is the **USERS RESPONSIBILITY** to either modify or remove the load liner to allow for canopy fitting.

If the load liner is left in place it may be necessary to drill some (relatively small) slotted holes in the liner to allow internal fixings to pass through. Some over-lip load liners may need to be trimmed in the width to allow the canopy side rail to sit flat.

Front fitting types

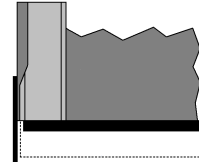
Front angle

The canopy front sits on the flat face along the front of the load bed.



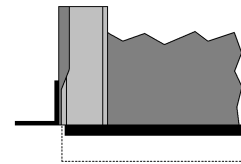
Alloy Strip

The canopy front has a lip that sits over the front face of the load bed.



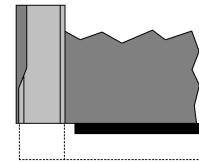
Lip that meshes with rack

The front lip or angle faces forward and is notched to fit around the vertical elements of the ladder rack.



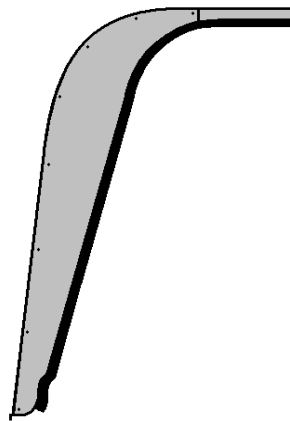
Flat / Over the rack

The canopy has a thin front panel that fits between the cab and the ladder rack.

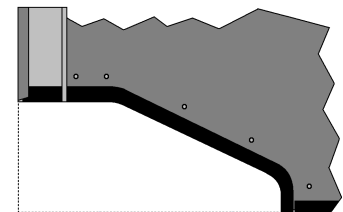


Side infill around cab (Landrover only)

The canopy has an open front and thin triangular fillets fitted with a weather seal, these fillets seal against the cab sides or wrap around side windows.



Special cutout around fixture (Navara only)



These canopies are cut out to fit around a fixed obstruction, in this case a ladder rack mounting bracket that protrudes beyond the side of the canopy fitting area.

High Level brake lamps

When fitting a canopy to any vehicle equipped with a cab mounted rear stop light the light **MUST** be permanently disabled.



If this must be disabled in accordance with any statutory or health and safety requirement it must be so disabled in such a way as to comply with all relevant legislation. If in doubt please consult your vehicle manufacturer for the correct method of disabling the lamp. Ifor Williams Trailers Ltd accepts no responsibility whatsoever for loss or damage resulting from any modifications carried out on the vehicle including the disabling of the stop or other lights, obscuring it/them or any damage caused to it/them or the vehicle or loss of value suffered in respect of it/them or the vehicle by the fitting of the canopy.



Kubota RTV900

Utility vehicle

Fitted with V375

Please note:

Some variations of this vehicle may require the rear road lights re-positioning when canopy is fitted.

Placing an order

If the vehicle can be successfully identified from the enclosed tables then the standard order form for trailers & canopies can be used. If however the vehicle differs significantly from the figures given, or is known to be a new make or model that is not listed then enquiries should be made with IWT customer care department and an availability date requested.

No promises should be made with regard to price or delivery for a canopy to suit a vehicle that is not shown in these tables or has been ordered with any special / non standard options.

Tolerance on sizes

Sizes stated in the tables above are our clearance sizes to suit the fitting system employed and may be between 3-5mm over the actual dimension measured. (or 3-5mm under in the case of canopies designed for inside fitting)

Changes in this issue

This issue (3.)1 corrects some minor errors in version 3 please ensure that any issue 3 or older copies are disposed of.



Whilst every care is taken to ensure that the information in this guide is correct, no liability can be accepted for any loss, damage or injury caused by any errors in, or omissions from, the information given.

Names of vehicle manufacturers, their model names, codes etc are given for reference only.

Ifor Williams Trailers Ltd., Cynwyd, Corwen, Denbighshire, LL21 0LB, UK